

Mastering

Finder Windows

<option> double-click

Normally you just double-click to open an item in Finder, but if you hold down the <option> key while doing it, the current window will close as the new one opens.

Spring loaded folders

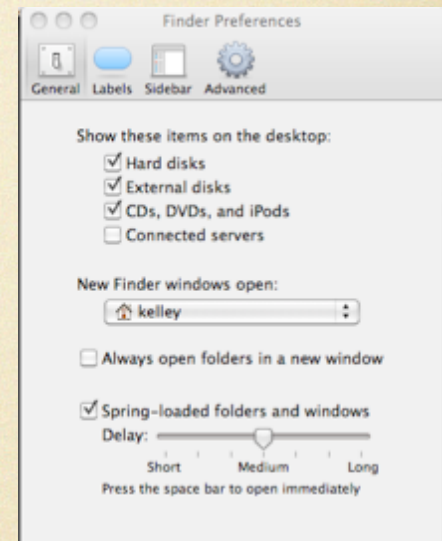
This allows you to easily drag a file to wherever you want. If you drag a file onto a folder icon and hold it there, the folder will spring open allowing you to drag a file into a folder within a folder, etc.

Hold down the space bar while doing this to lessen the delay before the folders spring open.

Finder Preferences

There are several cool things you can do in the Finder Preferences panels.

You can change the delay time for spring loaded folders, and set the default location that a new Finder window (`<command>n`) will go to.

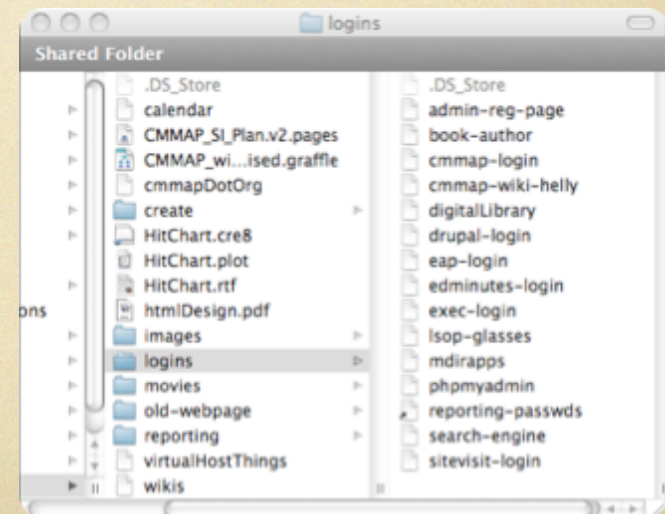
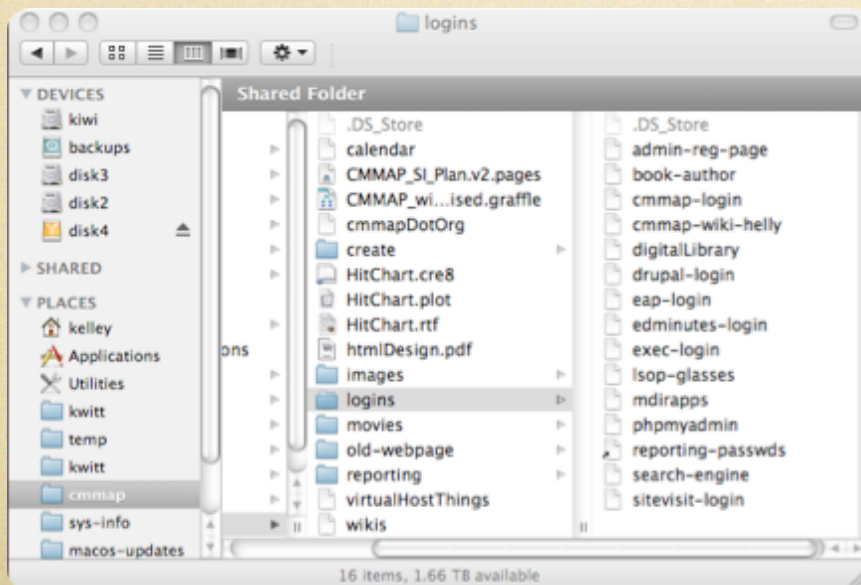


You can color code files and folders using File menu but name those colors in the Labels area.

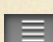

Toolbar & Sidebar

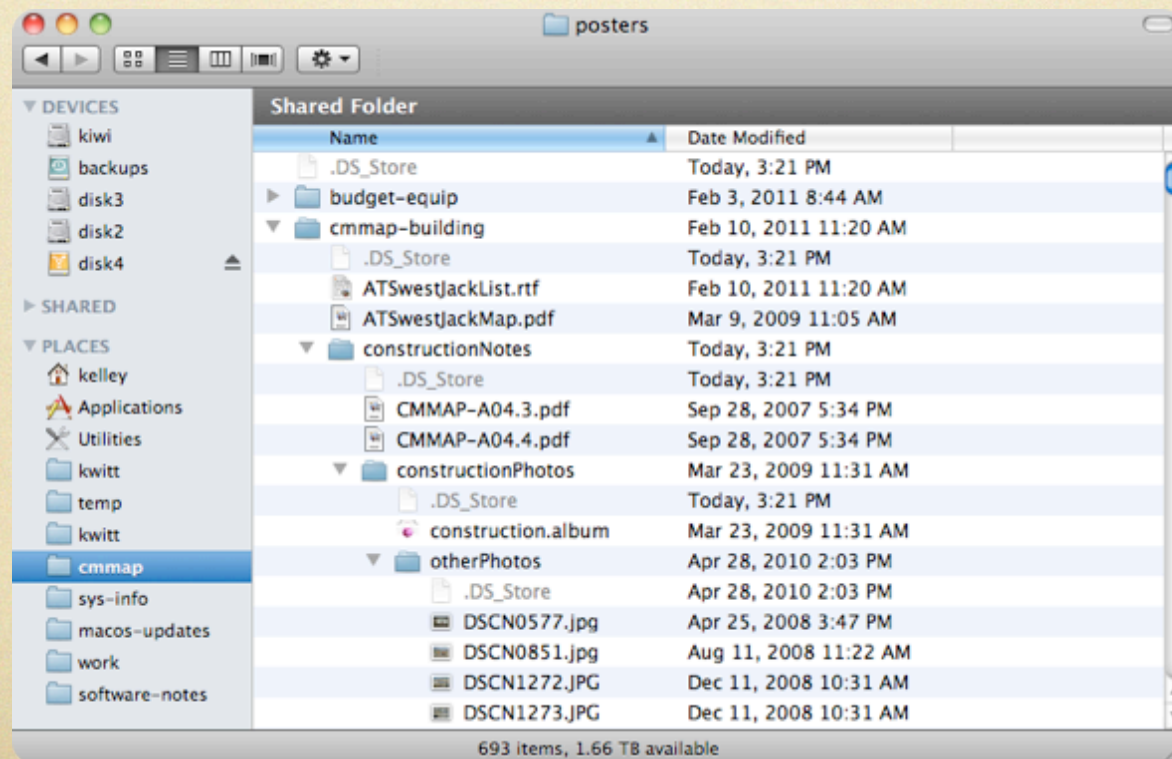
<command><option>t will hide/show both toolbar and sidebar.

Both are customizable by dragging/dropping.
<command><option> needs to be held down when customizing the toolbar as we learned 2 fapcrds ago with the pill button.




List view expansion triangles

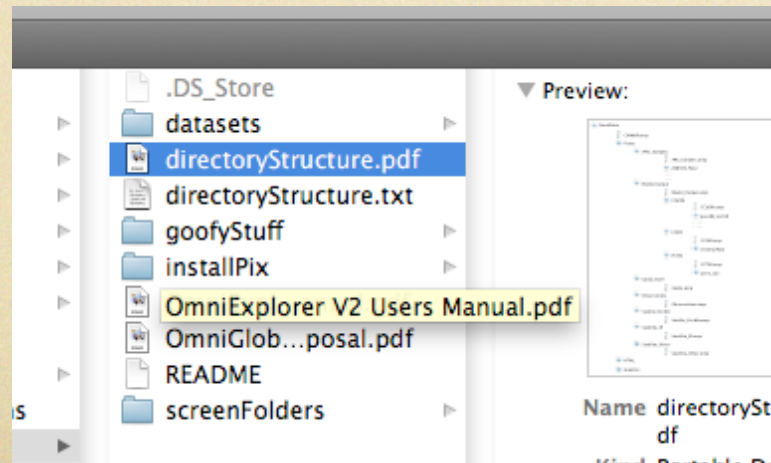
In list view  you can peek into folders using the expansion triangles.  <option> clicking the triangle will expand the folder along with all folders it contains recursively. <option> click again will collapse everything.



Column view and resizing

Column view often truncates filenames because of the thin default columns. You can resize these by dragging the  “handle”. If you double click the handle, the column will resize to fit the largest file or folder name.

Also, hovering over the truncated name will eventually bring up the full name in a yellow text box.



Changing between views

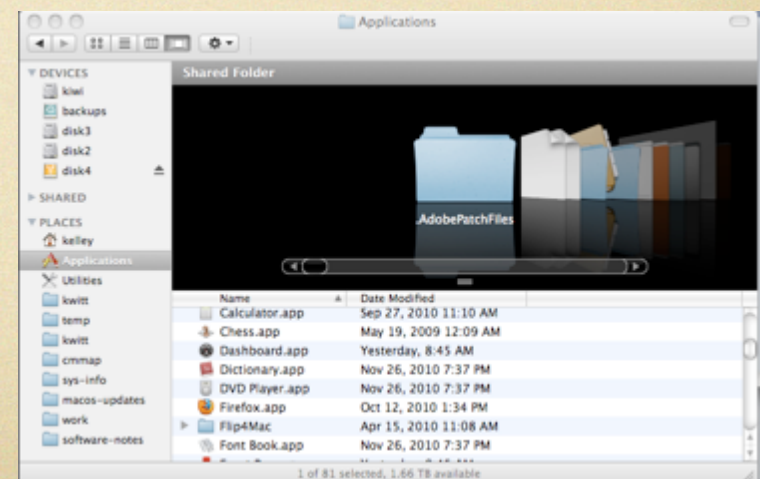
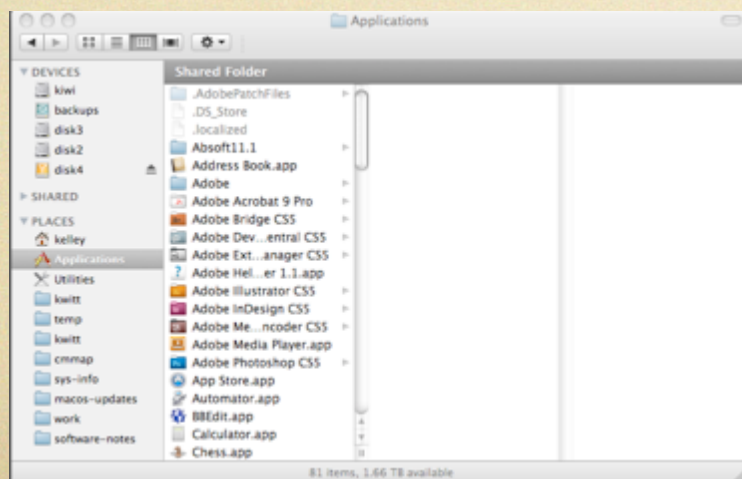
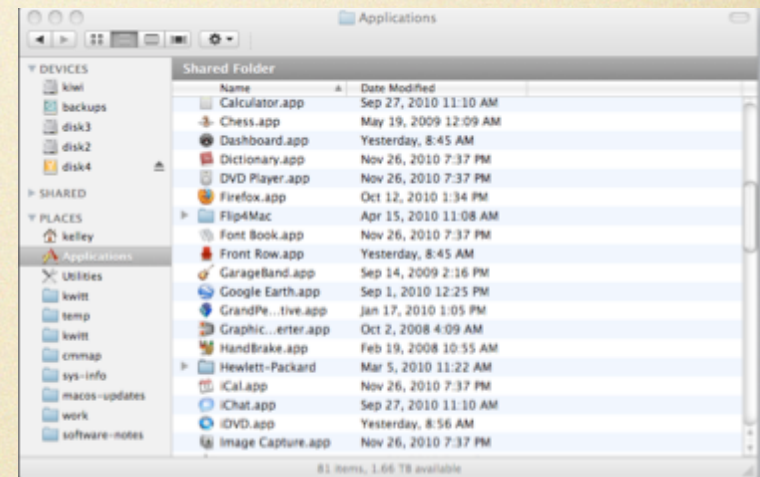
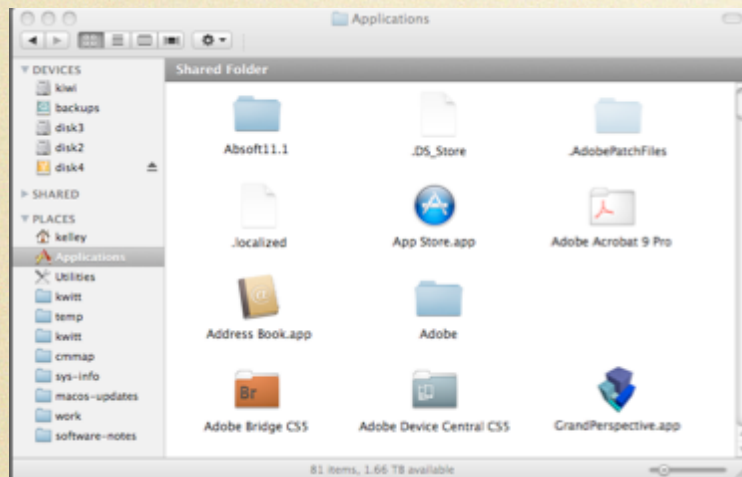
Quickly change between views:

<command> 1 = Icon

<command> 2 = List

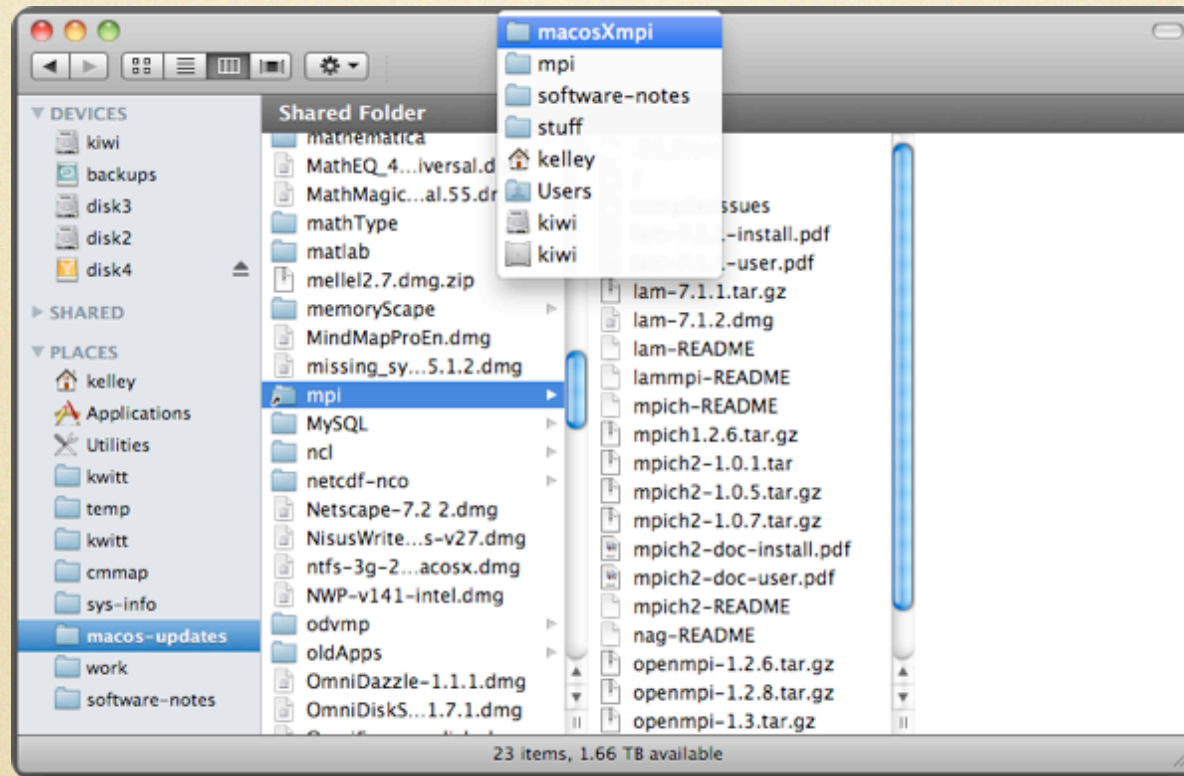
<command> 3 = Column

<command> 4 = Flow view



Finding path for title bar

<command> click on the title bar gives you the path to the current location, allowing you to jump to any of the enclosing folders.



Hidden files and folders

By default, Finder tries to make it easy for you to find things and, therefore, eliminates the display of hidden (dot) files/folders and many system files and folders. To show everything:

Command:

```
> defaults write com.apple.finder AppleShowAllFiles True
```

