

Organizational Stuff



First CMAP Team Meeting, August 15-17, 2006

List of Working Groups:

| # | Objective(s) | Leader(s) | When |
|----|--|--------------------------------------|--------------|
| 1 | Extensions, evaluations, and applications of the prototype MMF(s) | Khairoutdinov | Tuesday PM |
| 2 | Development of a second-generation MMF, and a global cloud-resolving model | Randall and Arakawa | Wednesday AM |
| 3 | Development and testing of improved parameterizations of microphysics and radiation for use in CSRMS, MMFs, and GCRMs | Krueger, Kreidenweis, and Barker | Wednesday AM |
| 4 | Development and testing of improved parameterizations of boundary-layer clouds and turbulence for use in CSRMS, MMFs, and GCRMs -- <i>Will meet together with WG 6</i> | Bretherton and Moeng | Thursday AM |
| 5 | Innovative analysis, evaluation, and interpretation of MMF results using emerging datasets | Rossow | Wednesday AM |
| 6 | Accelerated improvement of conventional parameterizations -- <i>Will meet together with WG 4</i> | Stevens | Thursday AM |
| 7 | Optimal use of computational and data storage resources | Helly | Thursday AM |
| 8 | K-12 Education and outreach to the public and policymakers | Jones, Denning, Foster, and Kathlene | Tuesday PM |
| 9 | Undergraduate and graduate education, and teaching future teachers | Denning and Drossman | Wednesday AM |
| 10 | Increasing the diversity of climate scientists | Pandya, El Hakim, Denning, Canetto | Thursday AM |
| 11 | Knowledge-transfer to climate modeling centers | Collins | Thursday AM |
| 12 | Knowledge transfer to numerical weather prediction centers | Jakob | Tuesday PM |
| 13 | New open-access journal | Schubert | Tuesday PM |
| 14 | Book on the history of global modeling | Donner | Wednesday AM |

First CMAP Team Meeting, August 15-17, 2006

List of Working Groups:

| Tuesday PM | Wednesday AM | Thursday AM |
|--|--|---|
| <p>Extensions, evaluations, and applications of the prototype MMF(s)</p> <p>Main Meeting Room</p> | <p>Development of a second-generation MMF, and a global cloud-resolving</p> <p>Main Meeting Room</p> | <p>Development and testing of improved parameterizations of boundary-layer clouds and turbulence for use in CSRMS, MMFs, and GCRMs</p> <p><i>and</i></p> <p>Accelerated improvement of conventional parameterizations</p> <p>Main Meeting Room</p> |
| <p>K-12 Education and outreach to the public and policymakers</p> <p>Windsor II Room</p> | <p>Innovative analysis, evaluation, and interpretation of MMF results using emerging datasets</p> <p>Windsor I Room</p> | <p>Knowledge-transfer to climate modeling centers</p> <p>Fort Collins Room</p> |
| <p>New open-access journal</p> <p>Fort Collins Room</p> | <p>Undergraduate and graduate education, and teaching future teachers</p> <p>Salons F & G</p> | <p>Increasing the diversity of climate</p> <p>Windsor I Room</p> |
| <p>Knowledge transfer to numerical weather prediction centers</p> <p>Salons F & G</p> | <p>Book on the history of global modeling</p> <p>Fort Collins Room</p> | <p>Optimal use of computational and data storage resources</p> <p>Windsor II Room</p> |
| | <p>Development and testing of improved parameterizations of microphysics and radiation for use in CSRMS, MMFs, and GCRMs</p> <p>Windsor II Room</p> | |

WG sign-up sheets

**WG Leaders, get sheets from Cindy.
Return to Cindy or me when WG ends.**

WG Reports

- ◆ **Brief oral reports in plenary**
- ◆ **Written reports (Powerpoints?) to DR or CC or KW**
- ◆ **Include summary of what was said.**
- ◆ **Include plans for next 6 months.**

Subawards and Funded CSU People



Subawards

- Most of the contracts should arrive at your institutions by the end of this week, and will back-date to July 1
- Documentation to support invoices



CSU Funded People

- Project back-dates to July 1
- Most people have received information regarding your chunk of change
- Documentation to support expenditures



Cost Share

- 30% of total budget requested from NSF, or \$5.68M over 5 years
- Must be documented on an annual and cumulative basis, reported to NSF, and certified by an authorized institutional representative
- Cost share funds become part of the overall STC budget and therefore must align with Federal Cost Accounting Standards, and can be audited

External Cost Share Partners

- Proper documentation is very important.
- We'll be in touch to confirm existing agreements, discuss procedures and answer any questions.



CSU

Cost Share Partners

- For the portion of cost share that is not related to the building, we are setting up cost share accounts that will be managed by ATS
- We will be in touch very soon to solidify existing agreements, discuss procedures and answer questions



Reporting

- CMMAP Annual Report will be due April 1
- Subaward institutions reports will be due to us July 31 and January 31
- Input from everyone else for the report will be due to us January 31

<http://cmmmap.colostate.edu/>

CMMAP

[HOME](#)

Center for Multi-Scale Modeling of Atmospheric Processes



[HOME](#)

[MISSION](#)

[NEWS](#)

[ORGANIZATION](#)

[TEAM MEMBERS](#)

[CALENDAR](#)

[PUBLICATIONS](#)

[CONTACT](#)

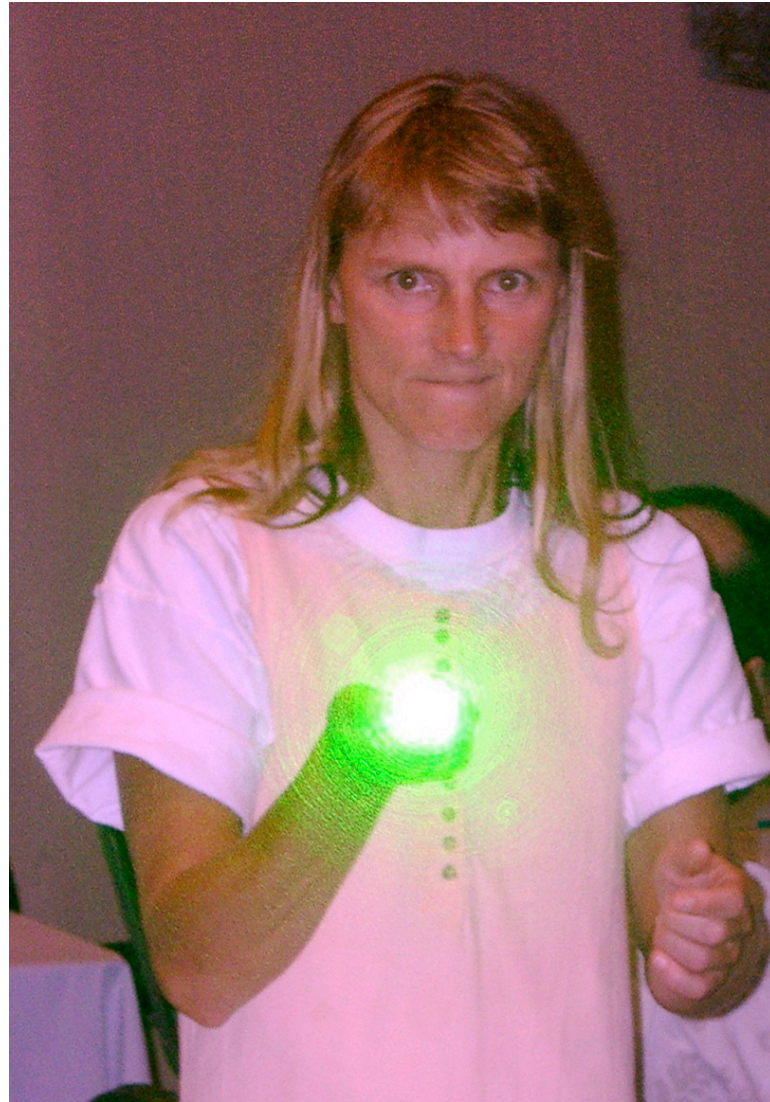
[MEMBER AREA](#)

The National Science Foundation announced a new Science and Technology Center (STC) on July 14. The new STC was awarded to Colorado State University and its partners and will be called the Center for Multi-Scale Modeling of Atmospheric Processes (CMMAP).

[Press Release](#)



[Home](#) | [Mission](#) | [News](#) | [Organization](#) | [Team Members](#) | [Calendar](#) | [Publications](#) | [Contact](#) | [Member Area](#) | [Webmaster](#)



Reporting

- Ad hoc reports may be requested at any time with short notice
- STC annual reporting requirements are posted on the CMMAP website in the member area
- Web reporting function on CMMAP website



Reporting

- The budget is complex
- We have 24 combined objectives for research, education, diversity and knowledge transfer
- We expect to be asked to report cost by objective, so we are developing accounting structures to track accordingly



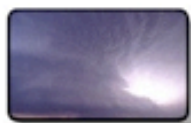
CMMAP

Center for Multi-Scale Modeling of Atmospheric Processes

HOME



- HOME
- MISSION
- NEWS
- ORGANIZATION
- TEAM MEMBERS
- CALENDAR
- PUBLICATIONS
- CONTACT
- MEMBER AREA



Member Area

- UPCOMING EVENTS
- ETHICS TRAINING
- DOC EXCHANGE
- REPORTING FORM
- INTELLECTUAL PROPERTY

CMMAP

HOME

Center for Multi-Scale Modeling of Atmospheric Processes



- HOME
- MISSION
- NEWS
- ORGANIZATION
- TEAM MEMBERS
- CALENDAR
- PUBLICATIONS
- CONTACT
- MEMBER AREA



Activity Reporting

Put explanatory blurb here.

Diversity

Education

Knowledge Transfer

Research



Home | Mission | News | Organization | Team Members | Calendar | Publications | Contact | Member Area | Webmaster

Education Activity Reporting Form

Full Name

Phone Number

Email Address

Activity Name

Led By

Intended Audience

Approximate Number of Attendees *(if applicable)*

Type Internal External

Description *(include goals, outputs, outcomes or impacts)*

File to upload: no file selected

Publications

- Please acknowledge CMMAP support accordingly
- Instructions will soon be posted on the website
- Send preprints, conference abstracts, and other publications to us as soon as they are available
- Web submission for electronic files will be developed soon.



Intellectual Property Agreement

- All subaward institutions are required to sign the same IPA
- CSU OSP sent a draft IPA to all institutions for comments and approval
- All 13 institutions have agreed to sign a revised IPA, which will be part of their contract

Non-disclosure Agreement

- In the event that matters of a proprietary nature are discussed at future team meetings, the participants (excluding the subawardees) in the discussion will be asked to sign a non-disclosure agreement, or to exit the discussion



Visitors

- We can offer office space and computers, and limited travel funds in years 2-5
- If you would like to spend time at CSU, please contact us with your request, proposed dates, and what you plan to accomplish



Management team



- ◆ **David Randall, Director**
- ◆ **Chin-Hoh Moeng, Deputy Director**
- ◆ **Scott Denning, Associate Director for Education and Outreach**
- ◆ **Wayne Schubert, Associate Director for Knowledge Transfer**
- ◆ **John Helly, Associate Director for Computing**
- ◆ **Cindy Carrick, Administrative Director**

Administrative Director

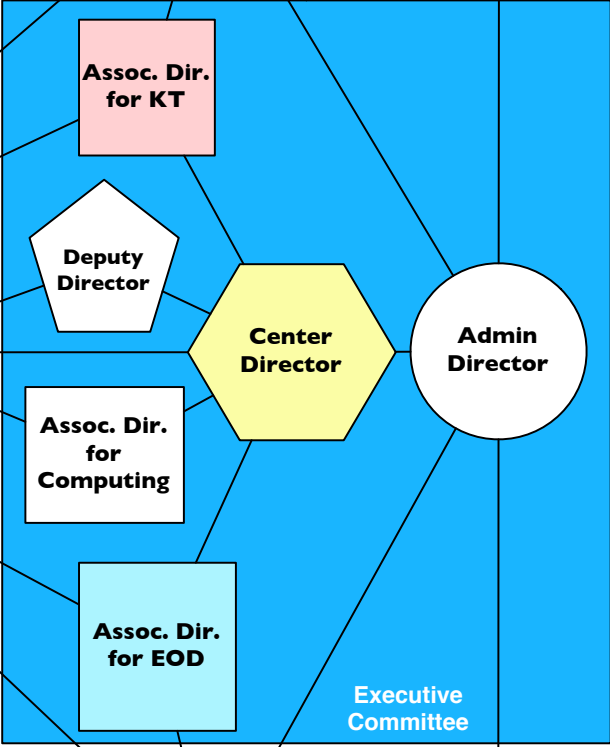


Dept
College
University

External Advisory
Panel

Financial
Analyst and
Partnership
Monitor

KT
Manager



KT
Partners

Research
Partners

EOD
Partners

EOD
Manager

Admin
Assistant

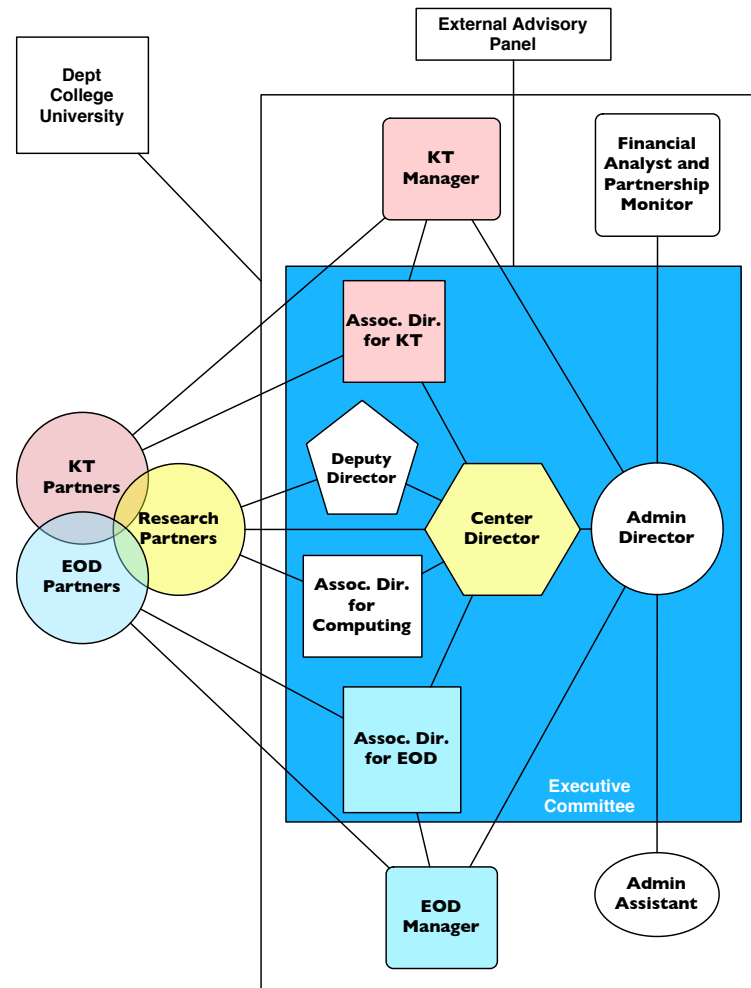
Executive
Committee

Executive Committee

- ◆ Orchestrates CMMAP's overall scientific direction;
- ◆ Recruits new partners and collaborators as appropriate;
- ◆ Enforces standards of ethics and research quality; develops diversity;
- ◆ Monitors progress relative to established milestones; and
- ◆ Promotes broad dissemination of results.

The EC will teleconference at least twice per month, to maintain tight communications across the project. Other CMMAP personnel will participate in the teleconferences as appropriate.

The EC will also meet face-to-face in conjunction with each of the twice-yearly CMMAP Workshops, and more often as necessary.



External Advisory Panel

CMMAP will create an External Advisory Panel (EAP) that meets at least once per year. The EAP will consist of six members, including a Chair. The EAP will monitor CMMAP's progress, and make recommendations to the EC. The members of the EAP will serve three-year terms, and the Chair will change every two years.

**Academic
research**

**Research
laboratories**

Computing

Education



Prof. Kerry Emanuel of the Massachusetts Institute of Technology has agreed to be the first Chair of the EAP. The other initial members of the EAP will be chosen later, through discussions between the EC and Prof. Emanuel.