

What is the Polar Vortex?

1

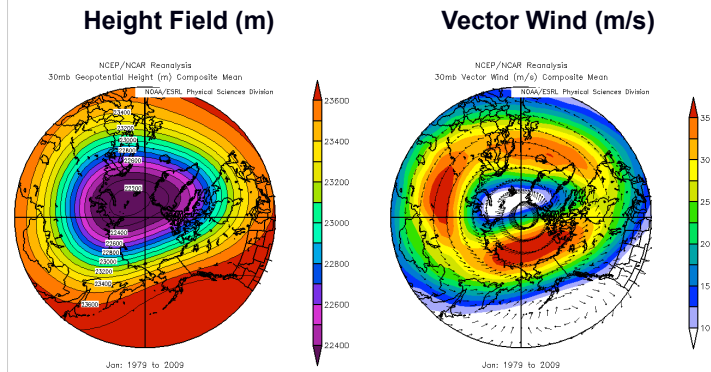
CURRENT PATTERN
AccuWeather.com

NCEP GFS 500 hPa HEIGHT [dm], Wind [knots]
Iss: 12Z04JAN2014 -- 18Z -- Valid Time: 00Z07JAN2014

cold air outbreak ~ cold wave ~ cyclone, etc. BUT NOT THE POLAR VORTEX!

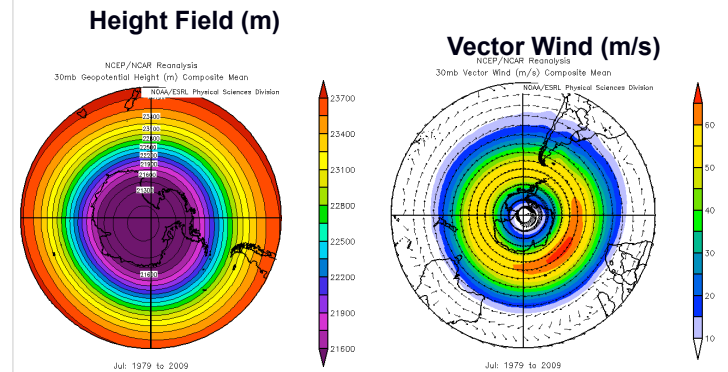
720x361 0.5x0.5 Forecast Grid | Global Spectral Model [57x4]
WxBell®

January Climatology at 30 hPa (~ 23 km) Northern Hemisphere (polar stereographic map)



This is the polar vortex – not a weather event, but something that forms every winter high above the poles.

July Climatology at 30 hPa (~ 23 km) Southern Hemisphere (polar stereographic map)



Wednesday AM, Explain: Polar Vortex

